



WHEN you are thinking of buying a wireless set, make up your own mind how you are going to use it.

Will you want to listen only to your local station? Will you want Continental programmes? Do you want plenty of volume? Or do you like it quiet? Nobody but yourself can decide these questions.

Now, when you have decided what you want your set for, my advice to you is to go to a reliable dealer, and he will help you to choose the set most suitable for you. Naturally, I shall say, go to a Murphy dealer, because he will not only be able to show you Murphy sets, but I know you will get good advice and first-class service afterwards.

Frank Murphy

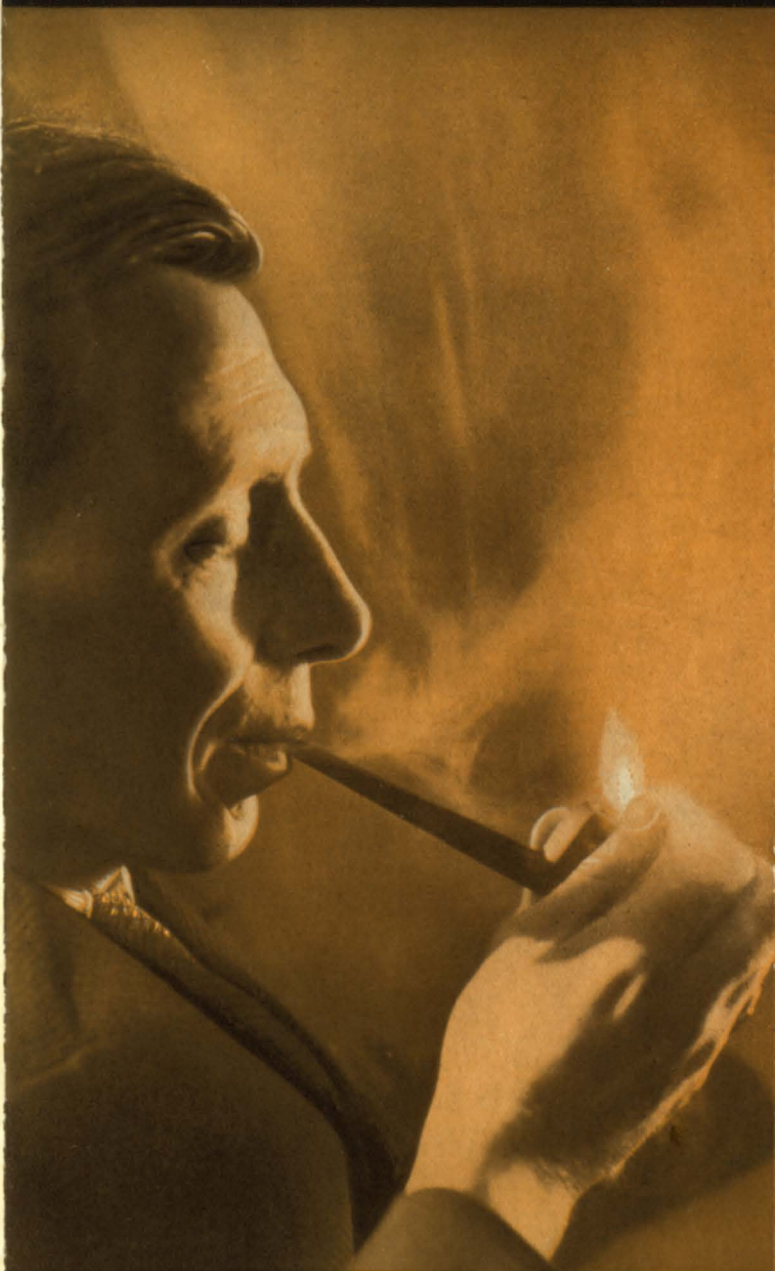
B.Sc., A.M.I.E.E., A.I.Rad.E., Chartered Elect. Engineer.

MURPHY
APPOINTED DEALER

W.T.DIX
Market Place
OLNEY.

379-3-33.

MURPHY



MURPHY



WE believe it is true to say that the first thing that impresses one when listening to a Murphy is the unusual beauty of tone.

When you have tested the set for yourself and found how easy it is to work, what volume and selectivity you have—then you will certainly be tempted to buy it.

And if you do buy it we think you will never regret your choice, because above all we aim to make Murphy sets reliable.

MURPHY A.4. This is a 4 valve all electric super-heterodyne receiver *for use on A.C. electricity only*. It is fitted with self-contained moving coil loudspeaker, and the cabinet is finished in Walnut and Rosewood. Single tuning control. Illuminated wavelength dial. Will receive British and many Continental stations. Very selective with extremely high quality of reproduction. Fitted with gramophone jack and extra loudspeaker sockets.

Size 17½" high × 15¼" wide × 10¼" deep.

MURPHY D.4. Exactly the same in specification and performance as the A.4, but *for use on D.C. electricity only*.

MURPHY B.5. This is a 5 valve battery super-heterodyne receiver for use by those who have no electricity. Cabinet and specification as A.4 above.

Models A.4, D.4 or B.5.

Cash Price **£14 . 10 . 0** Hire Purchase Terms Available



MURPHY A.8. An 8 valve superheterodyne receiver for use on A.C. electricity only.

We know of no other set which has quite the same beauty of tone, gives such a choice of stations or is so simple to work.

This set is the only British set that is fitted with **AUTOMATIC VOLUME CONTROL** operated by a valve specially developed for Murphy Radio. The "fading" of foreign programmes is eliminated. All stations come in at about the same volume from a whisper to full power according to your choice. Moving Coil Loudspeaker, Walnut cabinet. Fitted with gramophone jack.

Size 37" high × 24" wide × 13" deep.

Cash Price **£24 . 0 . 0** Hire Purchase Terms Available